

# Oral Motor Dysfunction Screener - Pediatrics

## Breathing Questionnaire:

- Does your child breath through their mouth?
- Can your child breathe easily through their nose?
- Do they have frequent congestion?
- Do they snore at night?
- Do they have poor sleep quality?
- Do they wake frequently?
- Do they have attention issues?
- Do they have enlarged tonsils? Adeoids?

## Oral Questionnaire:

- Do they have any oral habits? Thumb, finger, tongue, lip sucking?
- Do they still use a pacifier past 12 months?
- Is their tongue low and forward or coming out of their mouth at rest?
- Are their lips sealed at rest? / Do they have open mouth posture?
- Do they grind, clench, grind their teeth?
- Does your child have dental or orthodontic issues?
- Does your child have lip, tongue or cheek ties?
- Do they drool a lot past the age of 2?

## Swallowing/Feeding Questionnaire:

- Does their tongue push past their teeth when they swallow?
- Are they messy eaters or have difficulty eating?
- Do they have a limited diet and picky eating habits?
- Did they have prolonged sippy cup/bottle use?
- Do they experience behaviors during feeding? Refusals?

## Speech Questionnaire:

- Do they have any speech errors?
- Do they have a lisp?
- Are they hard to understand?

**If you answered yes to multiple red flags let us know! We are here to help you navigate any questions and to see if your child may benefit from myofunctional/speech/feeding therapy!**

# Signs & Red Flags - Pediatrics

## Breathing Assessment:

- Observe your child breathing at during the day when active and at rest
  - Does your child have an mouth open or closed?
  - Does your child produce audible/loud breathing? Labored breathing?
- Observe your child breathing at night?
  - Does your child have an mouth open or closed?
  - Does your child produce audible/loud breathing? Labored breathing?



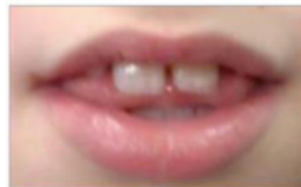
## Oral Assessment:

- Does your child have a tongue tie?
- Is their bite starting to 'open' due to potential thumb sucking, etc?



## Swallowing/Feeding Assessment:

- Does your child's tongue come out past their teeth when they swallow?
- Do they make a mess when eating? Have a hard time keeping food In?



## Speech Assessment

- Does your child's tongue come out past their teeth when they are talking?
- Are they are hard to understand? And make sound errors?

